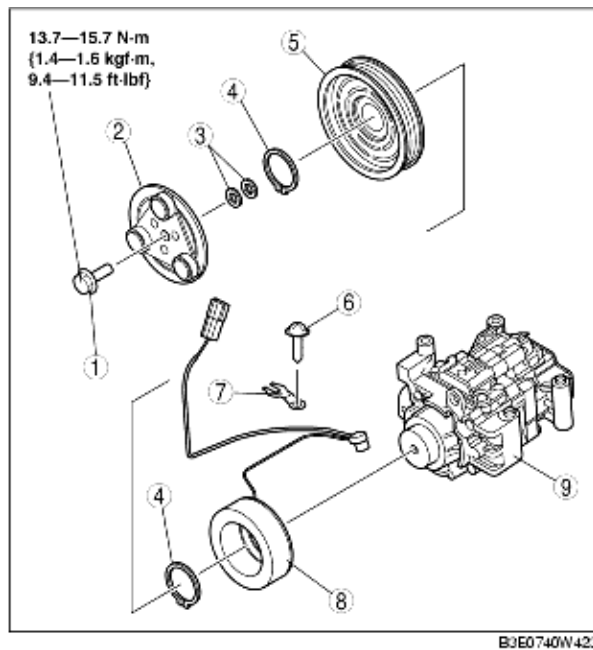


MAGNETIC CLUTCH DISASSEMBLY/ASSEMBLY [LF]

B3E074061010W02

1. Disassemble in the order indicated in the table.



1	Bolt (See Bolt Removal/Installation Note.)
2	Pressure plate
3	Shim
4	Snap ring (See Snap Ring Installation Note.)
5	A/C compressor pulley
6	Screw (See Screw Installation Note.)
7	Clamp (See Clamp Installation Note.)
8	Stator and thermal protector (See Stator and Thermal Protector Removal Note.) (See Stator and Thermal Protector Installation Note.)
9	A/C compressor body

2. Assemble in the reverse order of disassembly.

3. Adjust the magnetic clutch clearance. (See [MAGNETIC CLUTCH ADJUSTMENT.](#))

Bolt Removal/Installation Note

1. When removing or installing the bolt, hold the pressure plate in place as shown in the figure.

2. When installing a new A/C compressor body, replace the recommended bolt.